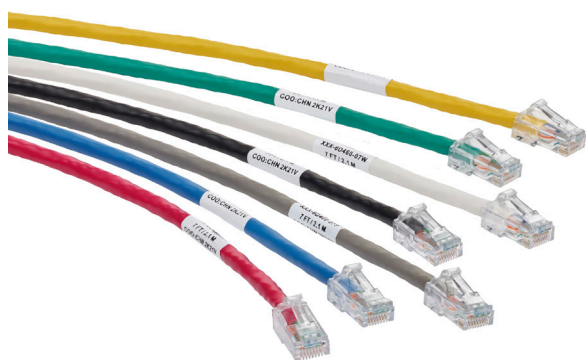


Cat 6 UTP Patch Cords

APPLICATION

Cat 6 UTP Patch Cords, with a compact plug and boot, feature a narrow profile to support traditional and high-density panels and switches. The snagless plug design makes the patch cords an excellent choice in environments where moves, adds, and changes are frequent. Shorter boot provides a shorter installed bend radius, ideal for applications with limited space.



SPECIFICATION

Patch cords shall meet or exceed electrical transmission performance requirements of links and channels as described in ANSI/TIA-568.2-D (Cat 6) and ISO/IEC 11801-1 (Class E) and EN 50173-1 (Class E). Patch cords shall be 24 AWG stranded conductor with an 8-position modular plug on each end. The cords shall include a narrow-profile boot that allows for easy cord removal without snagging. The cords shall be available in standard lengths of 1, 3, 5, 7, 10, 15, and 20 feet. Patch cord plug shall be clear and contacts shall have industry-standard, ANSI/TIA-1096-A compliant 50 micro inches of gold plating.

COUNTRY OF ORIGIN

China

WARRANTY INFORMATION

Limited Product and Limited Extended Warranties are rendered VOID if the installed structured cabling system is used for PoE applications that exceed the product's specified power rating. For Leviton product warranties, go to Leviton.com/ns/warranty.

FEATURES & BENEFITS

- Tested and verified to meet Cat 6 component requirements for TIA, ISO/IEC, and EN standards
- Compact plug and boot promotes shorter installed bend radius, ideal for limited depth applications
- Snagless plug design prevents tab breakage
- Integrated strain-relief
- Stranded conductor for longer flex-life
- T568B wiring to function in either T568A or T568B applications
- All patch cords are backwards compatible with earlier ANSI/TIA category ratings
- Channel performance verified by third-party testing in 4-conductor, 100-meter channel
- Accepts clip-on colored boot markers for network identifications
- Compatible with Leviton's Secure RJ system

DESIGN CONSIDERATIONS

- ANSI/TIA channel performance limits total length of patching and equipment cords to 32 feet (10 meters) per ANSI/TIA-568.2 or 88.6 feet (27 meters) in a MUTOA application
- A variety of colors for color coding or organization
- Available in seven standard lengths (custom lengths available)

STANDARDS & REGULATIONS

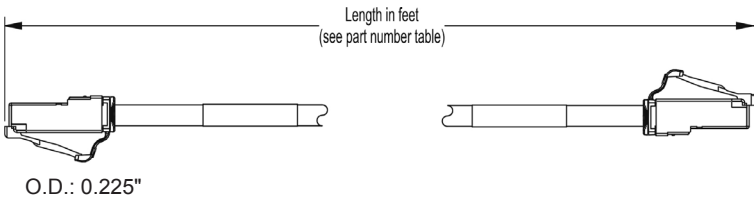
- ANSI/TIA-568.2
- ISO/IEC 11801-1
- EN 50173-1
- ANSI/TIA-1096-A (formerly FCC Part 68)
- UL 444 CM Rated
- IEEE 802.3 PoE Type 1, 2, 3, 4 (100 watts max)
- Cisco UPOE, UPOE+ (90 watts max)
- Power over HDBaseT™ PoH (95 watts max)
- For 100 watt applications - Up to 100 cables in a bundle
- c(UL)us Listed (UL 1863)
- RoHS 3

6D460-xxx

PRODUCT SPECIFICATIONS
6D460-xxx

MECHANICAL SPECIFICATIONS

Dimensions: See page 2
Outer Diameter: 0.225"
Materials: 24 AWG UTP stranded conductor, modular non-keyed, 8-position, 8-conductor plug, 94V-0 rated
Stocked Colors: White, yellow, red, blue, green, gray, black
Temp. (Storage): -20 °C to +70 °C
Temp. (Installation): 0 °C to +50 °C
Temp. (Operating): -20 °C to +60 °C
UL voltage rating: 300V



6D460-xxx

CAT 6 UTP PATCH CORDS – STOCKED ITEMS							
Description	White	Yellow	Red	Blue	Green	Gray	Black
Cat 6 UTP Patch Cord, 1 feet (0.3 m)	6D460-01W	6D460-01Y	6D460-01R	6D460-01L	6D460-01G	6D460-01S	6D460-01E
Cat 6 UTP Patch Cord, 3 feet (0.9 m)	6D460-03W	6D460-03Y	6D460-03R	6D460-03L	6D460-03G	6D460-03S	6D460-03E
Cat 6 UTP Patch Cord, 5 feet (1.5 m)	6D460-05W	6D460-05Y	6D460-05R	6D460-05L	6D460-05G	6D460-05S	6D460-05E
Cat 6 UTP Patch Cord, 7 feet (2.1 m)	6D460-07W	6D460-07Y	6D460-07R	6D460-07L	6D460-07G	6D460-07S	6D460-07E
Cat 6 UTP Patch Cord, 10 feet (3.0 m)	6D460-10W	6D460-10Y	6D460-10R	6D460-10L	6D460-10G	6D460-10S	6D460-10E
Cat 6 UTP Patch Cord, 15 feet (4.6 m)	6D460-15W	6D460-15Y	6D460-15R	6D460-15L	6D460-15G	6D460-15S	6D460-15E
Cat 6 UTP Patch Cord, 20 feet (6.1 m)	6D460-20W	6D460-20Y	6D460-20R	6D460-20L	6D460-20G	6D460-20S	6D460-20E

NOTE: Additional lengths and colors, such as Orange (O) and Violet (V), available. Please contact Customer Service for more information.



For assistance customizing your patch cords call Tech Support at 800.824.3005.

For further support information, visit Leviton.com/ns/support